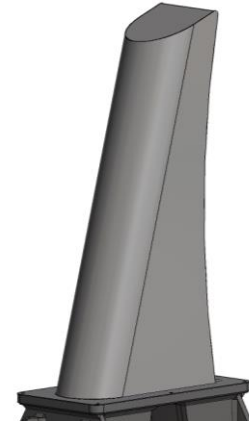
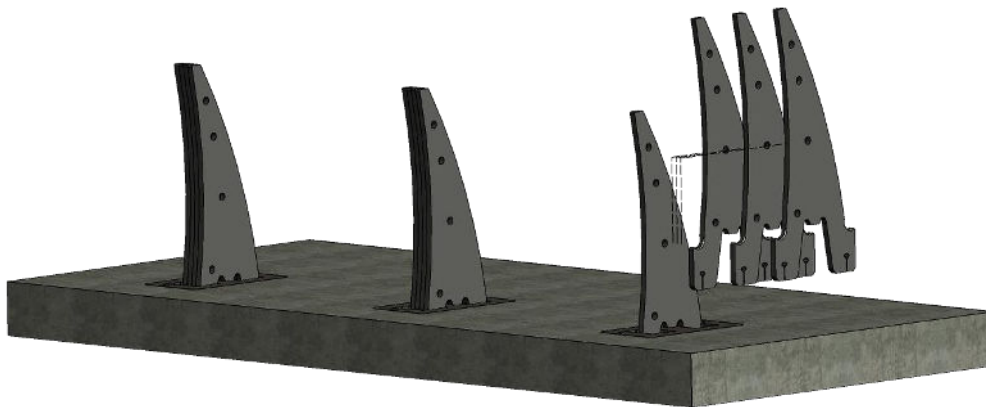

Technical Data Sheet

Triple bollard unit with foundation

Bollard with stainless steel shroud



Design:	removable blocking bollard(s) with blocking elements in layered construction, mounted in an underground housing for installation with shallow foundation
Kinetic Impact Energy:	1185 kJ (7.5 t @ 64 km/h)
Certification:	crash test certified according to PAS 68:2013 V/7500[N2]/64/90:0.3/15.7 and IWA 14-1:2013 V/7200[N2A]/64/90:0.7 (triple unit) Zero (static) penetration according to PAS 68:2013 and IWA 14-1:2013
Blocking Elements:	4 pcs. laser cuttings with base for insertion into underground housing, 25 mm sheet thickness
Foundation Depth:	220 mm (shallow foundation)
Blocking Width:	100 mm
Blocking Height:	900 mm
Foundation Size:	3900 x 1750 mm (triple unit)
Weight:	approx. 45 kg per blocking element approx. 325 kg per bollard
Options:	100 mm lowered foundation, warning strip red/white - 20x400 mm - VZ 600 - RA2/B, project-specific adaptation of blocking element, stainless steel shroud, complementation with accessory components for street furniture solutions
Colour Blocking Element:	Standard: RAL 7016 anthracite grey or RAL 7035 light grey Optional: other RAL colours or DB colours as well as colour combinations